

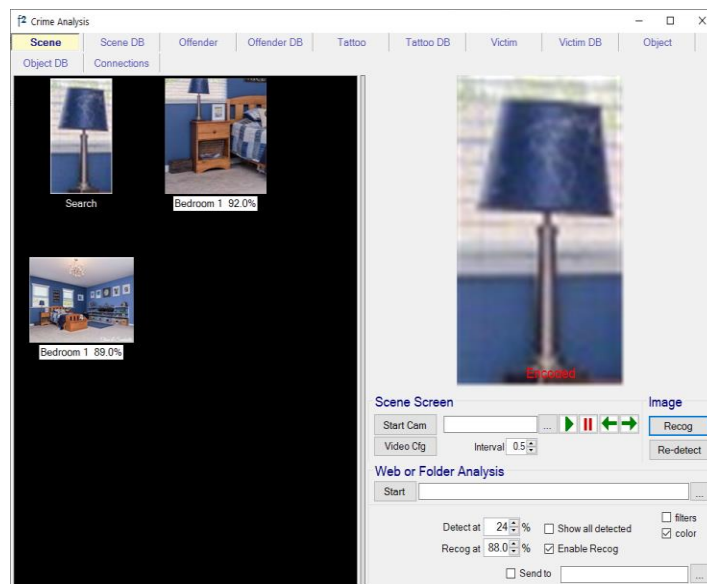


Face Forensics Inc.

Object Matching

Object matching is a capability within the f2 Image Recognition Suite, and is designed to provide four different functions:

- Find shots of the same object in a database, regardless of image format. Examples include vehicles, flags, logos, furniture, etc.
- Find images of a complete object from a partially concealed shot
- Find copies of an image that's been significantly altered
- Find multiple instances of an object in an image

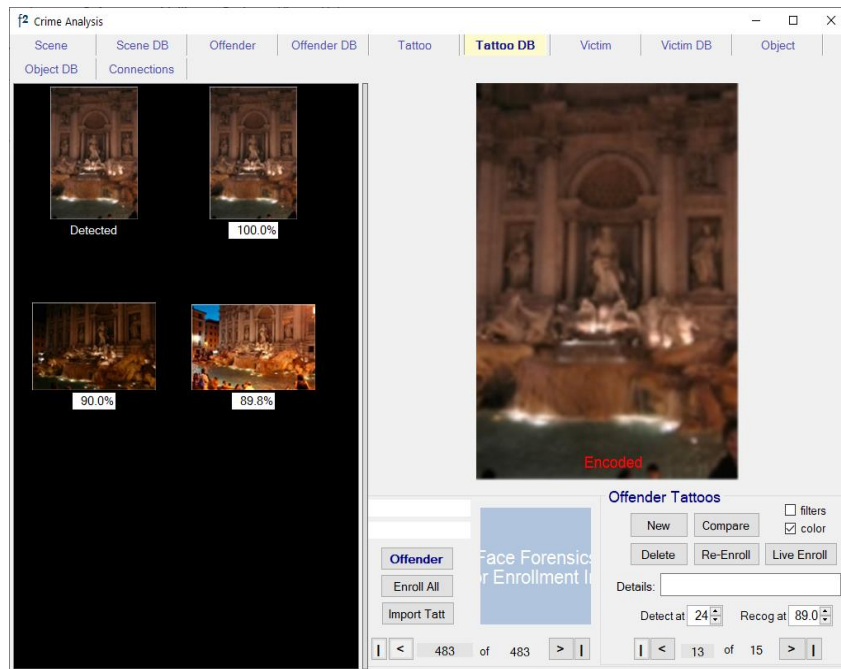


Lampshade on the right matched against a database, finding one medium size shade and one very small

The example above shows the result (on the left) of matching a specific “probe” object, in this case a lampshade, against a database containing shots of rooms. The top matches displayed on the left include details of their location, and an indication of the closeness of the match%.

In object matching mode, f2 matches the characteristics of the pattern of the image in terms of the relative locations of lines, curves, angles, color, etc. and encodes these into a numeric array which is a unique representation of the object. This provides the flexibility to match virtually any solid object, regardless of its position in the image, while maximizing search speed.

f2 can work with objects of any size, from large buildings to small personal items. It will work with shots where only a part of the object is visible.



Poorly-lit probe image on the right finds itself and two other matches above threshold in the original database taken at a different angle, and displays them, with their Match%'s, on the left

Features:

- f2 Object is designed to find and encode common patterns and characteristics across images, including in different formats
- Matches any size of object from very large to very small
- Image enhancement maximizes matching performance with small and lo-res images
- Probe and database images can match at up to a 35° rotational difference
- Straightforward to connect to existing databases containing images, in read-only mode
- Partially concealed objects can still be matched
- Side-by-side comparison of “probe” and matching image, including magnification, for visual inspection
- Clicking on any matching image will lead back to the original database record
- Automatic enrollment of the characteristics of all images in a database

f2 is available as a stand-alone/networked application, as a .Net SDK, and as a web service. It runs under Windows 10/11. f2 is downloadable for evaluation at no charge, with full support.

Contact: info@faceforensics.com

www.faceforensics.com