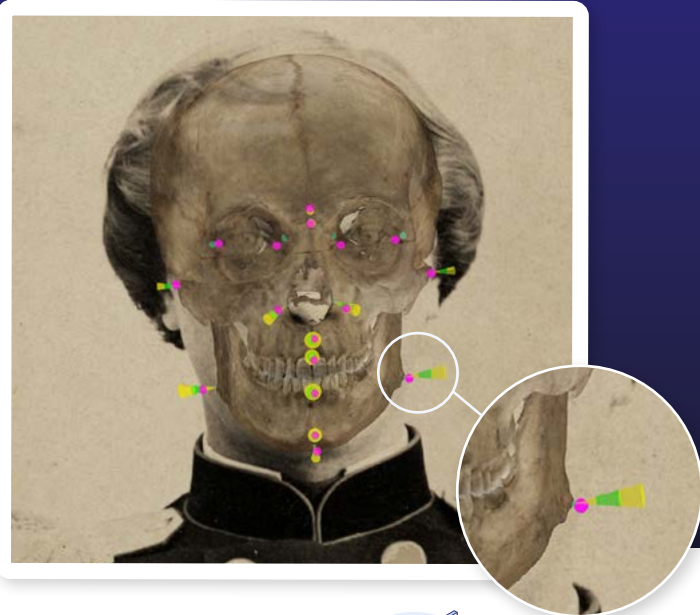


# Skeleton-ID

## Fast, accurate and objective human identification

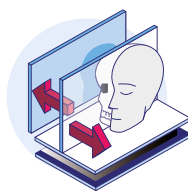
Skeleton-ID is used by law enforcement and government agencies worldwide and provides forensic experts with a solution when DNA and fingerprints are not available.



### Victim Identification without DNA

Our technology can be applied to search for candidates within databases of missing persons, to identify human remains in mass graves, or large-scale DVI scenarios.

Artificial Intelligence can automatically compare multiple antemortem facial photos of subjects with postmortem 3D models of unidentified skulls or faces to find a match.



### Virtual Lab for 2D and 3D Data Processing

We free forensic experts from using standard image processing software like Photoshop and 3ds Max that was not designed for human identification.

Our Virtual Lab facilitates the correct location of 2D and 3D landmarks, the editing of soft tissue direction and thickness, the accurate parameterization of the camera, and the analysis of morphological correspondence.



### Accelerate Forensic Case Work

Skeleton-ID provides all the tools needed by law enforcement to create databases of missing persons, manage secure access privileges, find matches efficiently, and export detailed reports for legal procedures.

Experts are being freed from repetitive tasks while results become more objective due to automation and compliance with international standards.



#### On-Premise

Skeleton-ID for institutions that require in-house hosting



#### Cloud

Easy global access to Skeleton-ID for independent laboratories

Both versions ensure an unbroken chain of custody while using advanced encryption for the transmission and storage of data.

We provide free access to the Cloud version for educational purposes.



The team of **Panacea Cooperative Research** consists of software engineers and researchers specialized in Artificial Intelligence, Computer Vision, and Anthropology.

Our mission is to develop paramount solutions for forensic identification and medical imaging and leave the world better than we found it.

Skeleton-ID is developed in cooperation with the University of Granada.

SketchCop® Solutions, Inc. is an authorized representative for Panacea, creators of Skeleton ID

For more information send us an e-mail at: [Contact@SketchCop.com](mailto:Contact@SketchCop.com) or call +1 951-264-9054.

